

The **SLS1522** is a general purpose linear potentiometer, designed with a single element conductive track for both automotive, and general industrial monitoring applications, where reliability, performance and pricing are important considerations.

Constructed from a robust Ø15.0mm aluminium case, they are assembled with a Ø6.0mm stainless steel shaft to provide a robust sensor with exceptional repeatability and linearity.

Available in measurement ranges between 75mm to 500mm (3" to 20"), this long stroke sensor is supplied with two lightweight polymer rod ends, which are fitted with steel balls for self-alignment during operation.

For total system integrity, they are fitted with fire and chemical resistant, high temperature, TPS125XL sleeved 24AWG signal cabling.

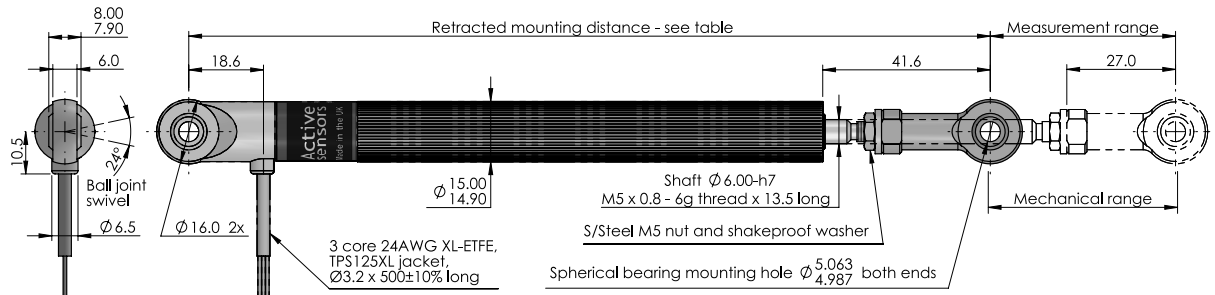
They are designed to operate to a maximum temperature of 125°C (257°F) and are environmentally protected against the ingress of dust and water to IP65.

Key features and benefits

- Low cost
- Measurement range 75 mm up to 500mm (3" to 20").
- Superior non-linearity $<\pm 0.15\%$ FS
- Ø15.0mm slim aluminium case with a Ø6.0mm stainless steel shaft
- Maximum operating temperature 125°C (257°F)
- Sealed to IP65
- 3 core 24AWG XL-ETFE TPS125XL cabling
- Fitted with Ø5.0mm rod ends
- Models available from stock
- Customs designs available on request



SLS1522 – Rod end mounting



Ordering information

SLS1522-3-XXX

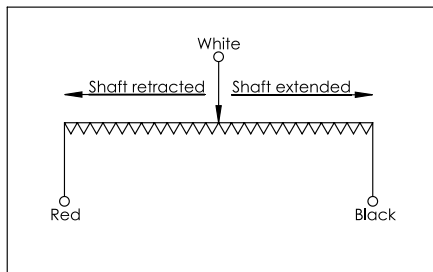
Measurement range in mm

Measurement range ($\pm 0.5\text{mm}$)	75	100	125	150	175	200	225	250	275	300	325	350	400	500	mm
Retracted mounting distance	199	224	249	274	299	324	349	374	399	424	449	474	524	624	mm
Resistance (typical)	3	4	5	6	7	8	9	10	11	12	13	14	16	20	Kohms
Non-linearity	$< \pm 0.15$														%FS
Applied voltage	< 66	< 88	< 110	< 130											VDC
Wiper load	> 500			> 600	> 700	> 800	> 900	> 1000	> 1100	> 1200	> 1300	> 1400	> 1600	> 2000	Kohms
Mechanical range ($\pm 0.5\text{mm}$)	Measurement Range +2														mm
Shaft velocity	< 10														m/s
Insulation resistance (at 500V DC.)	> 100														Mohms
Operating temperature range	-30 to $+125$														$^{\circ}\text{C}$
Sealing	IP65														
Shaft operation force (typical)	200														grams
Weight. (approx.)	106	116	126	136	146	156	166	176	186	196	206	216	236	276	grams
Materials	Case - Anodised aluminium 6063 T5 Shaft - Stainless steel 303 Rod Ends - Body: GF Polymer Spherical Ball: Nickel plated steel														

Notes:

- SLS sensors should be used as voltage dividers only.
- Incorrect wiring may cause internal damage to the sensor.
- General dimension tolerance is $\pm 0.25\text{mm}$.

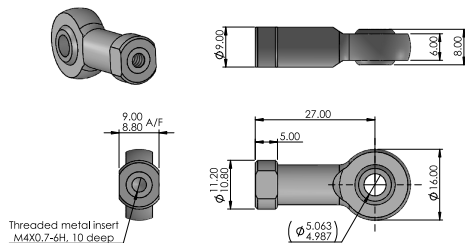
Electrical connections (see note 2)



Accessories

5mm rod end

Part No: PT1520-3-0104



Material:

Housing - 30% glass filled PBT (black)
Ball - Steel BS970 230M07, electroless nickel plated
Race - Gr nylon

Doc. Ref: WS-SLS1500-2

Page 2 of 2



Europe
Active Sensors Ltd.
Unit 12, Wilverley Road
Christchurch, Dorset
BH23 3RU, UK
+44 (0)1202 480620



North America
Active Sensors Inc.
8520 Allison Point Blvd, Suite 220
Indianapolis
IN 46250, USA
+1 317 713 2973

sales@activesensors.com