

RP5110

Rotary Potentiometer

This general-purpose sensor is used extensively in motorsport data acquisition systems for monitoring suspension movement, steering angle, throttle and gear position.

The sensor housing is manufactured from glass filled nylon and the operating shaft is stainless steel. The sensor is environmentally sealed as standard and is fitted with Raychem fire & chemical resistant, high temperature FDR-type55-24 signal cabling. The sensor housing is also designed for the easy fitting of an optional shrink down boot for additional sensor protection

Designed with a combination of Active's unique 'thick track' technology and precious metal multi-fingered electrical contacts, the sensor has an infinite output resolution coupled with long operational life.

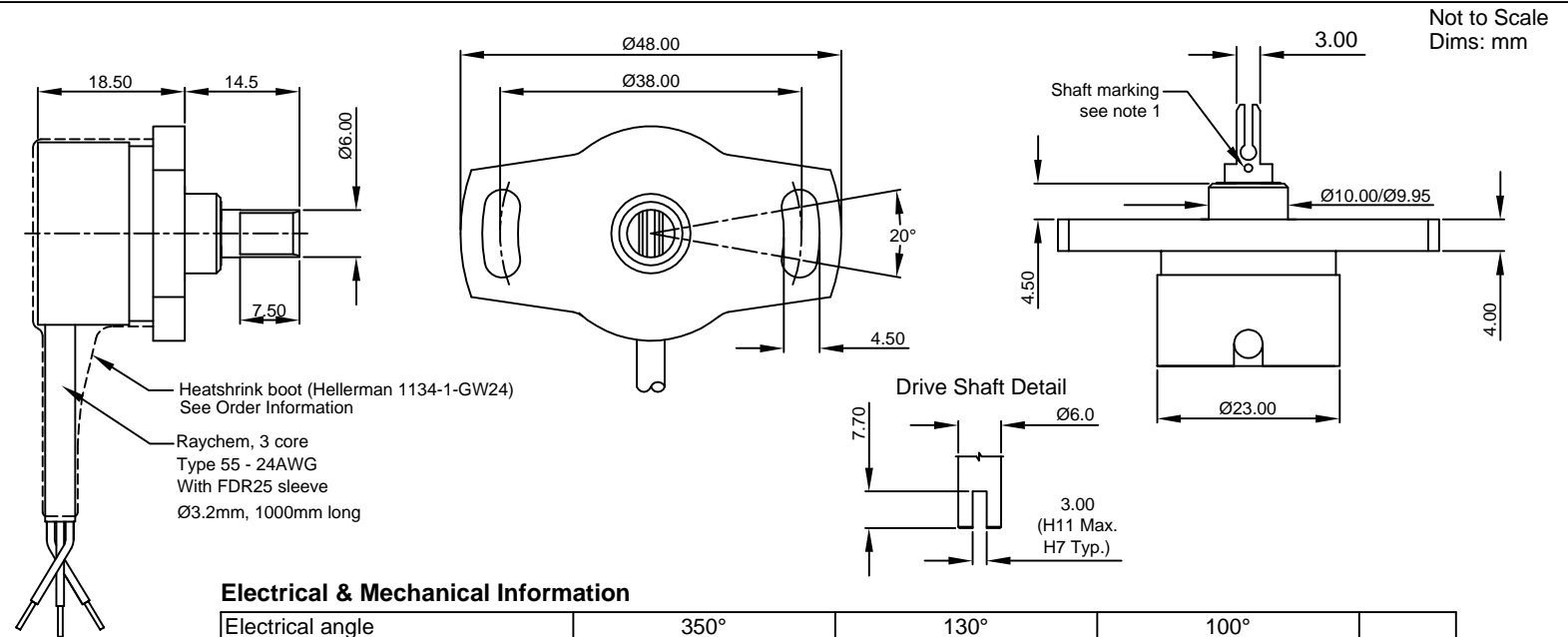
Other applications include precision actuator feedback and manufacturing process monitoring and control.

Other models in this range

- RP5120 - Round shaft option
- RP5130 - Spade shaft option
- RP5210 - Aluminium housing / sprung shaft
- RP5220 - Aluminium housing / round shaft
- RP5230 - Aluminium housing / spade shaft
- RP5310 - Triangular flange / sprung shaft
- RP5320 - Triangular flange / round shaft
- RP5330 - Triangular flange / spade shaft



sales@activesensors.com



Electrical & Mechanical Information

Electrical angle	350°	130°	100°	
Resistance (Typical)	3	1	1	K ohms
Non-linearity		<±0.50		%
Applied voltage	<42	<14	<14	Volts
Maximum wiper current		1		mA
Mechanical travel		360° continuous		
Insulation resistance (at 500V dc)		>100		M ohms
Operating temp. range		-55° to +125°		°C
Sealing		IP66		
Weight (approx.)		38		grams
Case material		Glass filled Nylon		
Shaft material		Stainless Steel 303 series		
Shaft bearing		Brass Bush		

Note 1: When shaft marking is facing cable exit, instrument is mid-travel. Note 2: Incorrect wiring may cause internal damage. Circuit recommendation: Due to the presence of a high contact resistance, these potentiometers should be used as voltage dividers only. Operation with wiper circuits of low impedance will degrade the output signal.

