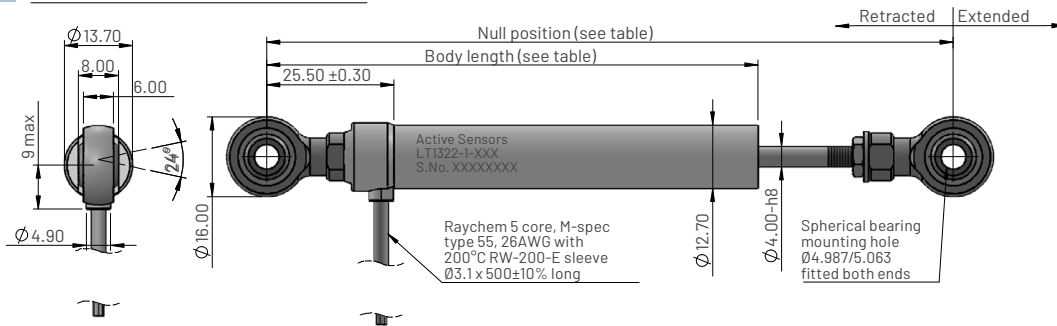


# LT1322 Series - LVDT position sensor (25mm to 200mm stroke)

Ø12.7mm body. Robust construction. 5mm rod-end mounting.

## Dimensions for LT1322-1-XXX



## Ordering code

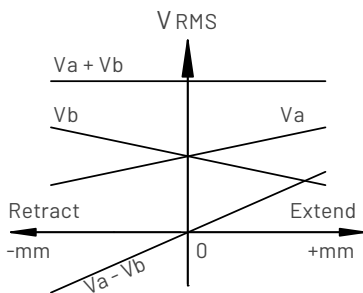
LT1322-1-XXX

Measurement range in mm

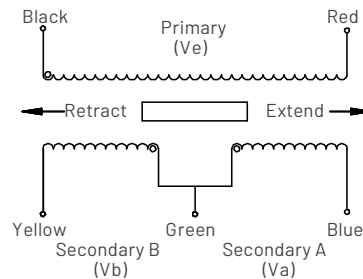
## Electrical and mechanical specification

Parameters	Values						Units	Tol	Notes
Measurement range (MR)	025	050	075	100	150	200	mm		
Electrical stroke	±12.5	±25.0	±37.5	±50.0	±75.0	±100.0	mm		
Mechanical stroke	±13.5	±26.0	±38.5	±51.0	±76.0	±101.0	mm	Max	
Body length	98.5	123.5	163.5	196.5	248.5	296.5			
Null position	137.5	175.0	232.5	273.0	350.0	423.0	mm	±0.5	
Input voltage (Ve)	3.0						Vrms	±5%	1
Input frequency	2500						Hz	±5%	
Non-linearity	<±0.5						% FS		3, 6
Ratiometric sensitivity	0.0250	0.0132	0.0100	0.0080	0.0060	0.0040	R/mm	±5%	2, 3
Va and Vb voltage range	1.000 - 1.910	0.935 - 1.855	0.788 - 1.733	0.720 - 1.680	0.635 - 1.675	0.819 - 1.911	Vrms	Nom	4, 5
(Va + Vb)/Ve Summation ratio	0.97	0.93	0.84	0.80	0.77	0.91	Vrms/Ve	±20%	
Thermal drift	<±0.010						%FS/°C		6, 7
Input impedance	>200	>300	>400	>500	>600	>700	Ohms		
Insulation resistance	>100						Mohms		8
Operating temperature range	-55 to +135						°C		
IP rating	IP67								
Weight (excluding cable)	57	69	89	102	126	148	grams	Nom	
Materials	Housing - Stainless steel 316, Shaft - Stainless steel 316								

## LVDT AC Output schematic



## Electrical connections



## Notes

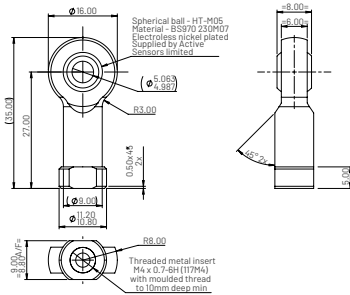
1. Sine waveform. THD <3%.
2. Ratiometric measurement mode (R) is defined as  $(V_a - V_b)/(V_a + V_b)$ .
3. Non-linearity error and ratiometric sensitivity is calculated by least squares best fit method.
4. Va and Vb are ratiometric with Ve.
5. Blue (Va) increases and Yellow (Vb) decreases as shaft extends (as shown in Output schematic).
6. FS is defined as ratiometric sensitivity x measurement range (MR).
7. Average thermal drift over operating temperature range.
8. Between prim and sec coils and all coils to case at 500Vdc.

# LT1322 Series - LVDT position sensor (25mm to 200mm stroke)

Ø12.7mm body. Robust construction. 5mm rod-end mounting.

## Accessories

### 5mm rod end

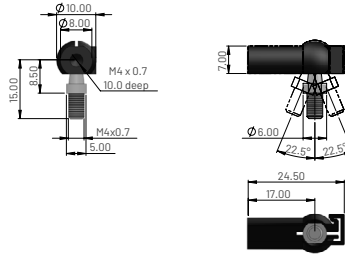


### Ordering code

PT1322-3-0104

Material	
Housing	30% glass filled PBT (black)
Ball	Steel BS970 230M07, electroless nickel plated
Race	Gr nylon

### Quick release ball joints



### Ordering code

JN029-003

Material	
Body	PA66, black
Ball stud	Hardened carbon
Steel	Zinc plated, clear passivate