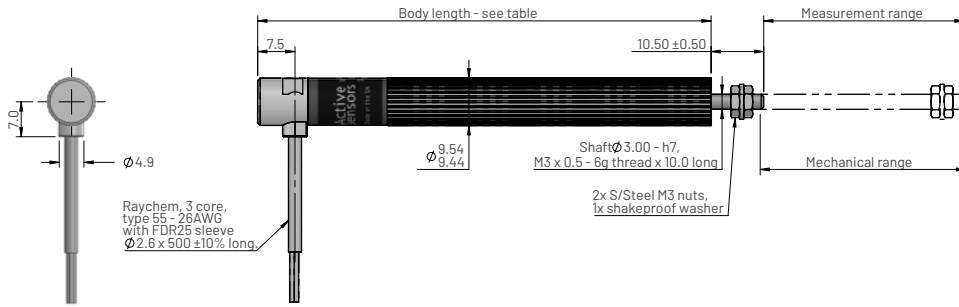


MLS0950 Series - Linear potentiometer

Dual element, multi-contact. Ø9.5mm Ultra-compact, slim body.

Dimensions for MLS0951 body clamp mounting

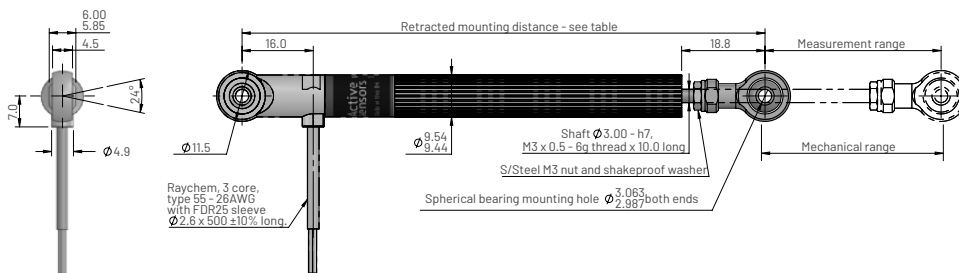


Ordering information

MLS0951-1-XXX

Measurement range in mm

Dimensions for MLS0952 3mm rod-end mounting

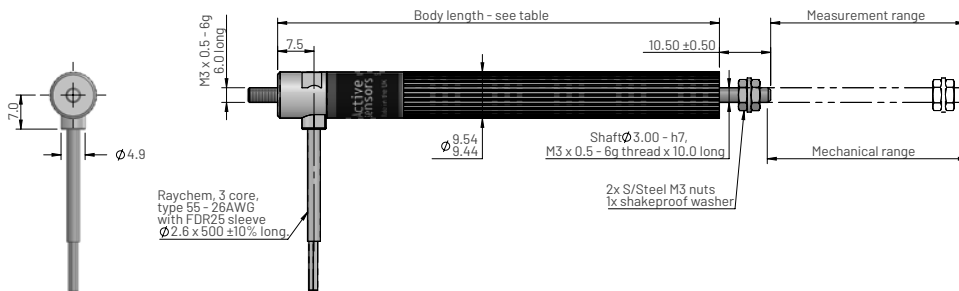


Ordering information

MLS0952-1-XXX

Measurement range in mm

Dimensions for MLS0956 threaded mounting



Ordering information

MLS0956-1-XXX

Measurement range in mm

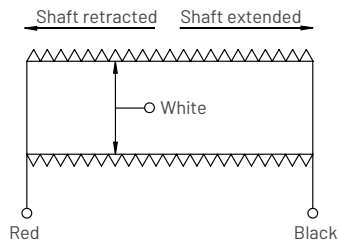
Electrical and mechanical specification for MLS0950

Parameters	Values										Units
Measurement range (±0.5mm)	10	20	30	40	50	75	100	125	150		mm
Body length MLS0951 and MLS0956	60.5	70.5	80.5	90.5	100.5	125.5	150.5	175.5	200.5		mm
Retracted mounting distance MLS0952	88	98	108	118	128	153	178	203	228		mm
Resistance (typical)	0.2	0.4	0.6	0.8	1	1.5	2	2.5	3		Kohms
Non-linearity	<±0.25					<±0.15					% FS
Applied voltage	<9	<18	<27	<36	<44	<66	<88	<110	<132		VDC
Wiper load	>500										Kohms
Mechanical range (±0.5mm)	Measurement range +2										mm
Shaft velocity	<10										m/s
Insulation resistance (at 500V DC)	>100										Mohms
Operating temperature range	-30 to +125										°C
Sealing	IP66										
Shaft operation force (typical)	200										grams
Weight MLS0951 and MLS0956 (approx.)	19.0	20.0	22.0	24.0	26.0	30.0	34.0	38.0	42.0		grams
Weight MLS0952 (approx.)	23.5	25.0	26.5	28.0	30.0	34.0	38.0	42.0	46.0		grams
Materials	Sensor	Case - Anodised aluminium 6060 T6, Shaft - Stainless steel 303									
	Rod-ends	Body: Anodised aluminium 6026, Spherical ball: Nickel plated steel									

MLS0950 Series - Linear potentiometer

Dual element, multi-contact. Ø9.5mm Ultra-compact, slim body.

Electrical connections (see note 2)

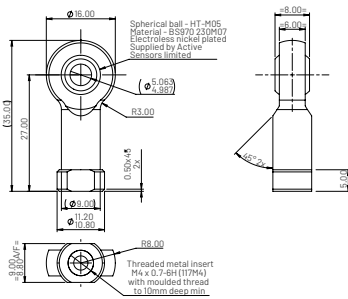


Notes

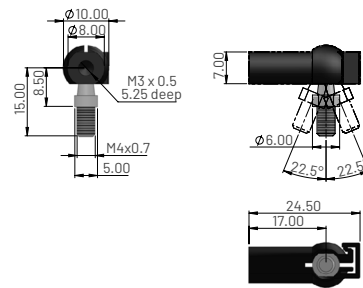
1. MLS sensors should be used as voltage dividers only.
2. Incorrect wiring may cause internal damage to the sensor.
3. General dimension tolerance is $\pm 0.25\text{mm}$.

Accessories

3mm rod end



Quick release ball joints



Ordering code

PT0952-0104-19

Ordering code

SA0950-4104

Material	
Housing	Aluminium alloy, anodised black
Ball	Steel BS970 230M07, electroless nickel plated
Race	Gr nylon

Material	
Body	PA66, black
Ball stud	Hardened carbon
Steel	Zinc plated, clear passivate