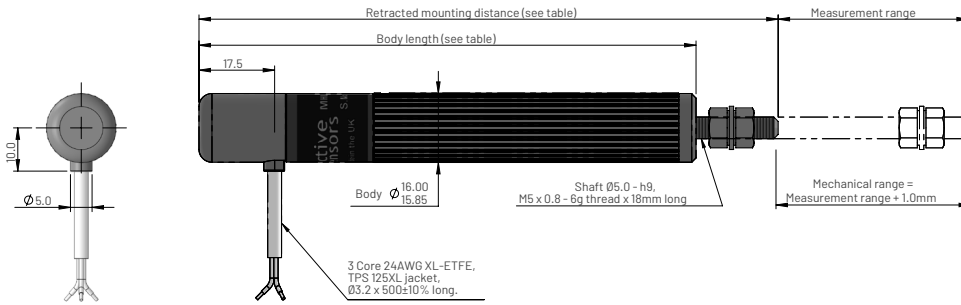


MHL1600 Series - Magnetic Hall linear position sensor (50mm to 300mm range)

Contactless Technology. 16mm Ø Body. 5mm Ø Operating shaft.

Dimensions for MHL1621 - Body clamp mounting



Measurement range	Body length	Retracted mounting distance	Approx. weight (grams)
50	140	159	50
75	165	184	56
100	190	209	62
125	215	234	68
150	240	259	74
175	265	284	80
200	290	309	86
250	340	359	98
300	390	409	110

Ordering code

MHL1621 XV-XXX

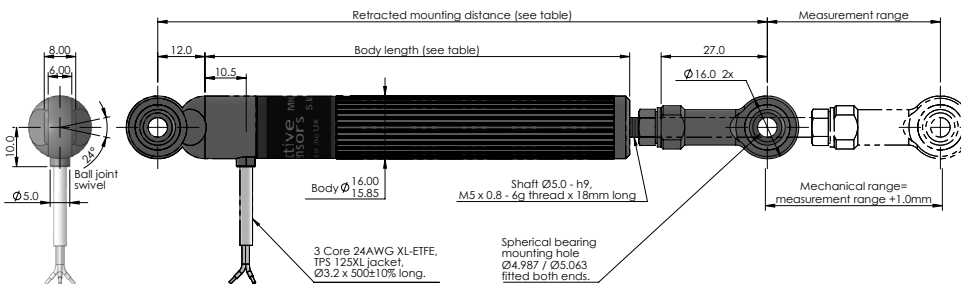
Output option (see graph)

L = Retracted output increases

R = Extended output increases

Measurement range in mm

Dimensions for MHL1622 - Rod end mounting



Measurement range	Body length	Retracted mounting distance	Approx. weight (grams)
50	133	180	59
75	158	205	75
100	183	230	81
125	208	255	87
150	233	280	93
175	258	305	99
200	283	330	105
250	333	380	117
300	383	430	129

Ordering code

MHL1622 XV-XXX

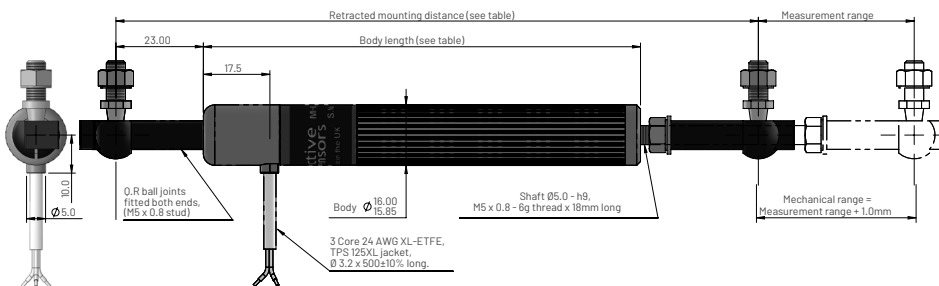
Output option (see graph)

L = Retracted output increases

R = Extended output increases

Measurement range in mm

Dimensions for MHL1626 - Quick release ball joint



Measurement range	Body length	Retracted mounting distance	Approx. weight (grams)
50	138.7	178.7	54.5
75	163.7	203.7	60.5
100	188.7	228.7	66.5
125	213.7	253.7	72.5
150	238.7	278.7	78.5
175	263.7	303.7	84.5
200	288.7	328.7	90.5
250	338.7	378.7	102.5
300	363.7	403.7	108.5

Ordering code

MHL1626 XV-XXX

Output option (see graph)

L = Retracted output increases

R = Extended output increases

Measurement range in mm

MHL1600 Series - Magnetic Hall linear position sensor (50mm to 300mm range)

Contactless Technology. 16mm Ø Body. 5mm Ø Operating shaft.

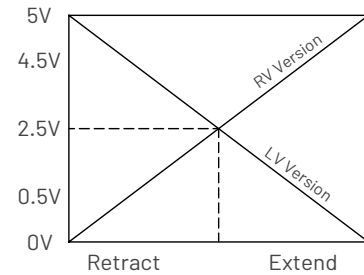
Electrical and mechanical specification for MHL1600

Input specification		
Supply voltage (Vs)	5.0±5% regulated	8 to 30 unregulated
Over voltage protection	Up to 50	
Supply current	During power on settlement <100, normal operation up to 50mm = 30. Add 10 for each extra 25mm of sensor range	
Reverse polarity protection	Up to -50	
Power on settlement time	<250	
Input voltage rise time	0.25 minimum	
Output specification		
Output type	Analogue voltage	
Output direction	See output characteristics graph	
Voltage output (Vout)	0 to Vs	0 to 5
Line regulation	Ratiometric with Vs	<0.01
Monotonic range	1 to 99% measurement range	
Load resistance	>10K	
Output noise	<5	
Performance specification		
Resolution	0.025	% of measurement range
Sensitivity (Note 2)	Ideal span (5000mV) / Measurement range(mm)	
Sensitivity tolerance	<±2.5	
Non-Linearity (Note 2)	<±0.5	
Temperature coefficient (Vout)	<±0.003	<±0.011
Update rate (nominal)	800	
General specification		
IP rating	IP68 and IP69K	
Shaft operation force (typical)	20	
Life (shaft in bush bearing)	>20 million cycles	
Dither life	Contactless - no degradation	
Operational temperature	-40 to +125	See de-rating graph
Storage temperature	-55 to +150	
Materials	Sensor	Case: Anodised aluminium 6063 T5, Shaft: Stainless steel 303
	Rod-ends	Body: Anodised aluminium 6026, Spherical ball: Nickel plated steel
	QR ball joints	Body: Nylon, Ball joint: Steel BZP

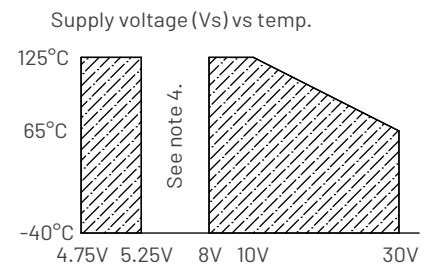
Electrical connections (see note 1)

Wire Colour	Function
Red	Supply Voltage (Vs)
White	Output Voltage (Vout)
Black	Ground (0V)

Output characteristics



Temperature de-rating

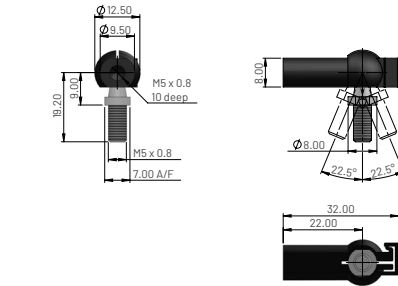
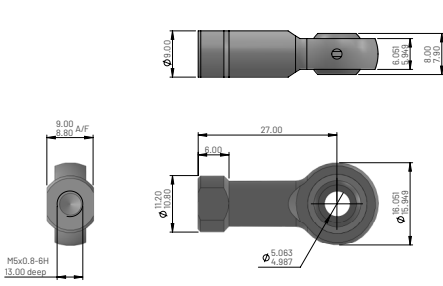


Notes

1. Incorrect wiring may cause internal damage.
2. Sensitivity and non-linearity are calculated from least squares best fit method.
3. Due to the Hall effect technology used in this device, close proximity of ferrous materials and magnetic fields may influence output.
4. Do not operate sensor between 5.25V and 8V.
5. General dimension tolerance is ±0.25mm.

MHL1600 Series - Magnetic Hall linear position sensor (50mm to 300mm range)
 Contactless Technology. 16mm Ø Body. 5mm Ø Operating shaft.

Accessories



5mm rod end

Order code: PT1922-0104-19

Material	
Housing	Aluminium alloy, anodised black
Ball	Steel BS970 230M07, electroless nickel plated
Race	Gr nylon

Quick release ball joint

Order code: JN029-007

Material	
Body	PA66, Black
Ball stud	Hardened carbon steel
Coating	Zinc plated, clear passivated

Contact (Europe)
 Active Sensors Ltd,
 Unit 12, Wilverley Road,
 Christchurch, Dorset,
 BH23 3RU, UK

Contact (North America)
 Active Sensors Inc,
 8520 Allison Pointe Blvd, Suite 220,
 Indianapolis,
 IN 46250, USA